



Pars Basin Modeler 1D

Main Features

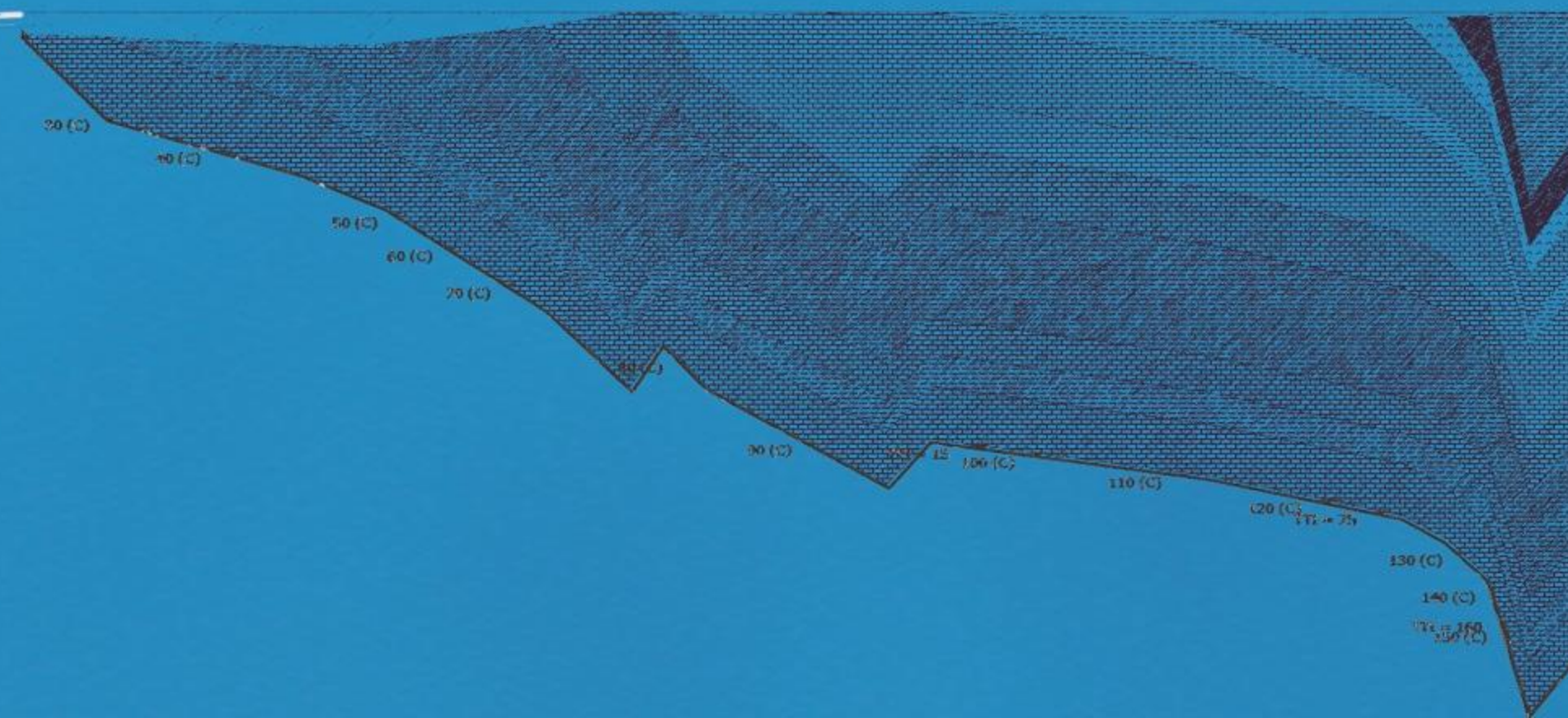
- Burial/Thermal history model of complex stratigraphy data
- Maturity history and maturity vs. depth model by using TTI and Easy %Ro methods
- Base map and maps of depth, temperature and maturity
- Hydrocarbon generation curve/rate and transformation ratio model
- Cross section of wells with depth, temperature and maturity
- Formation history of depth, thickness, temperature and maturity



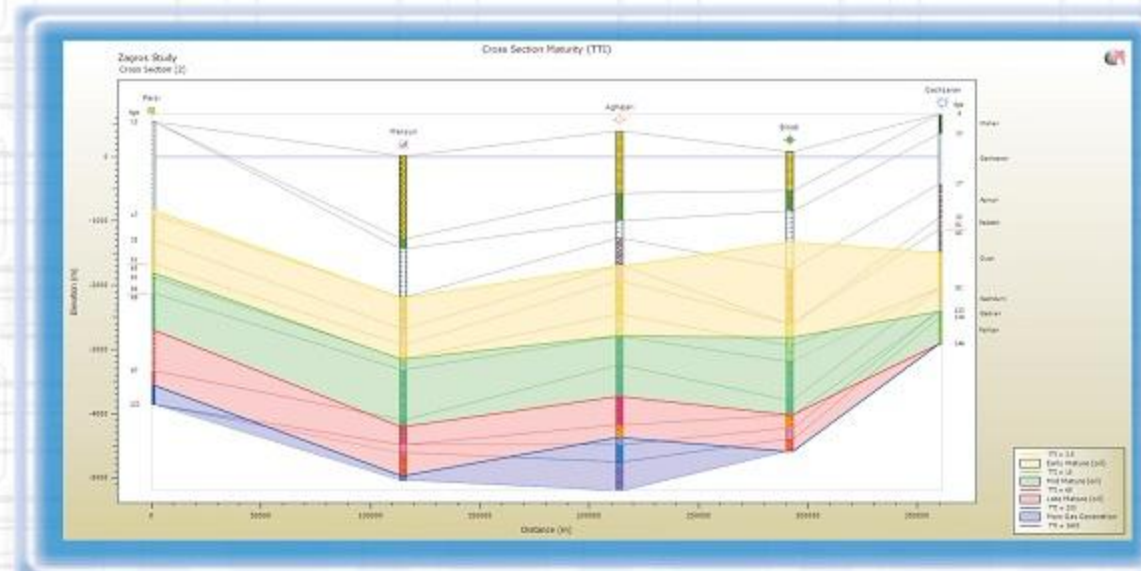
Research Institute Of
Petroleum Industry



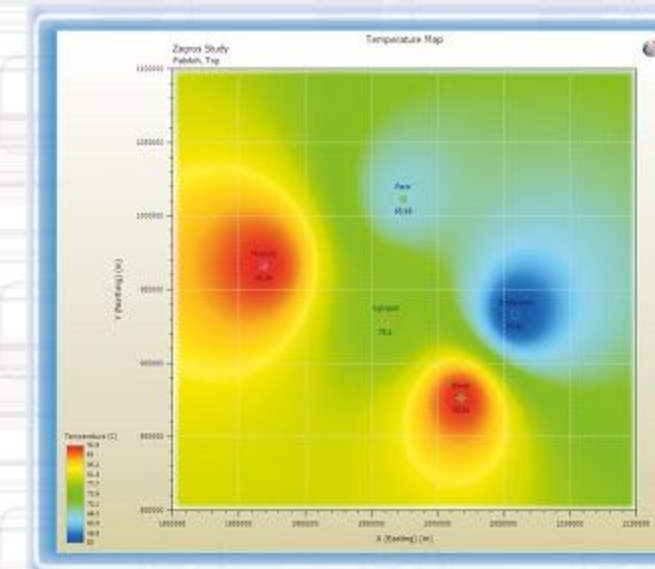
Research Institute of Petroleum Industry (RIPI)
West Blvd. Azadi Sport Complex, P.O.Box: 14665-173 ,Tehran , Iran
Tel : +98(21) 44739540-60 , Fax: +98(21) 44739712
www.ripi.ir



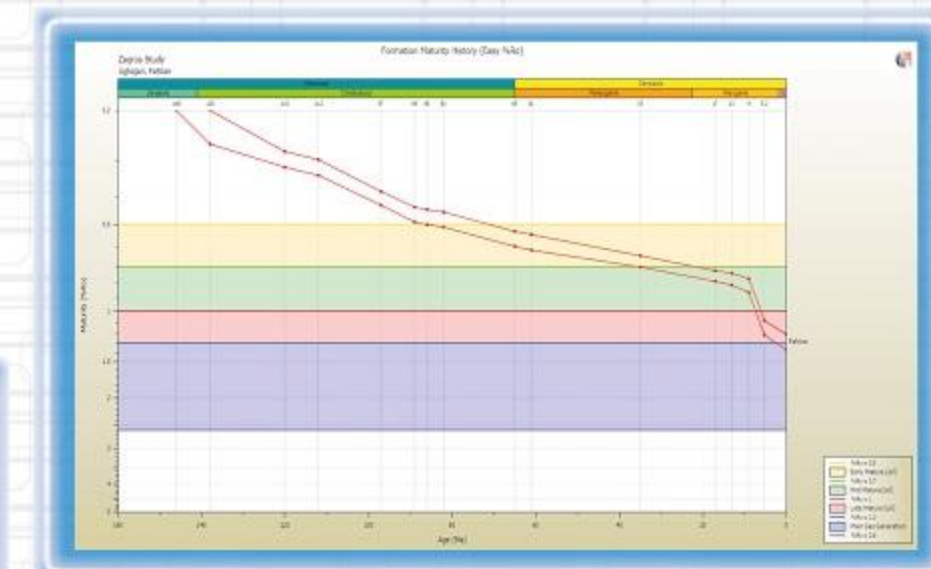
One of the first tasks in most petroleum systems evaluations is to understand the maturity, timing and volumetric potential of the relevant source rocks. This task often begins with 1-D basin models constructed from well penetrations or from synthetic stratigraphic sections derived from seismic data. *PBM 1D* is a basin modeling software that determines burial, thermal and maturity history as well as timing of hydrocarbon generation and expulsion for a 1D basin model.



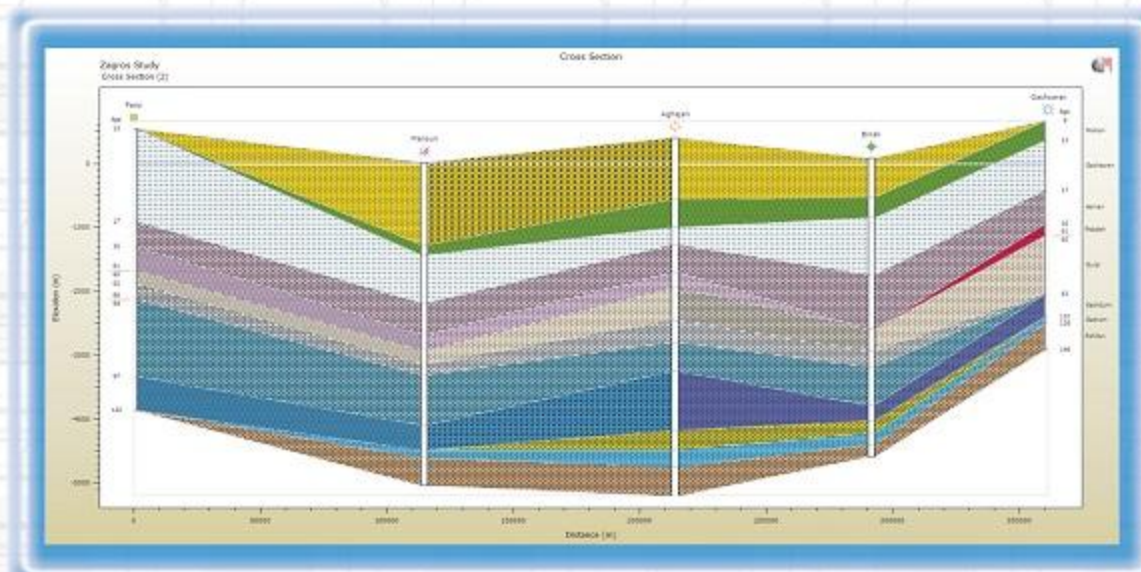
Cross Section Maturity



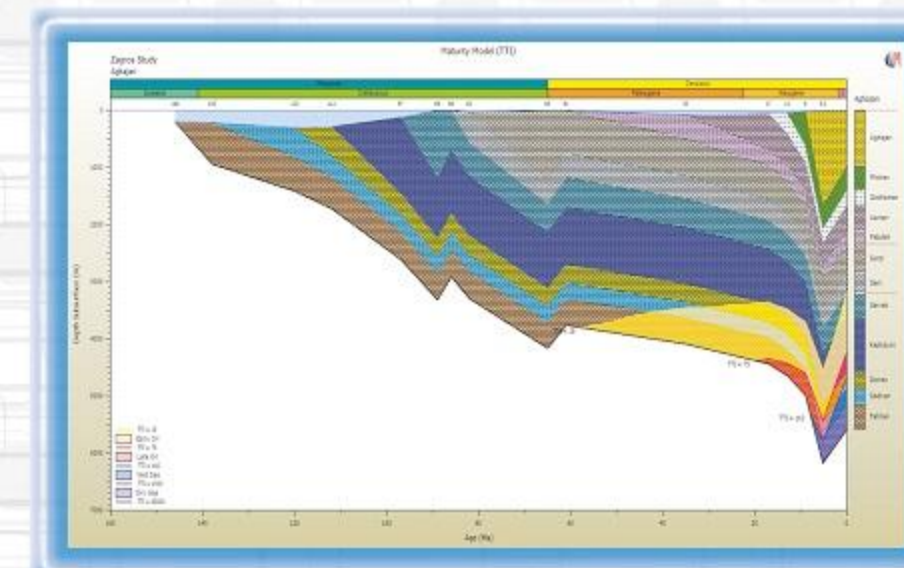
Temperature Map



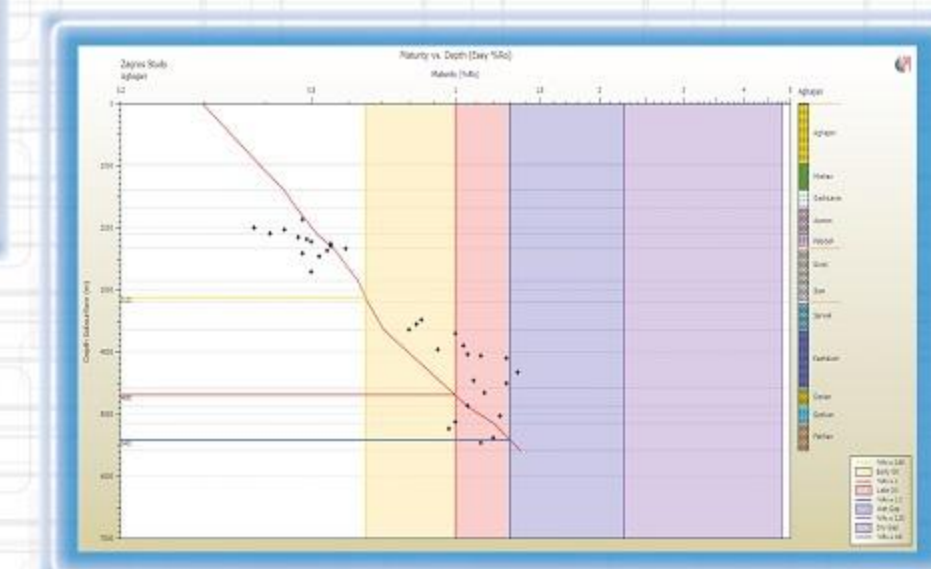
Formation Maturity



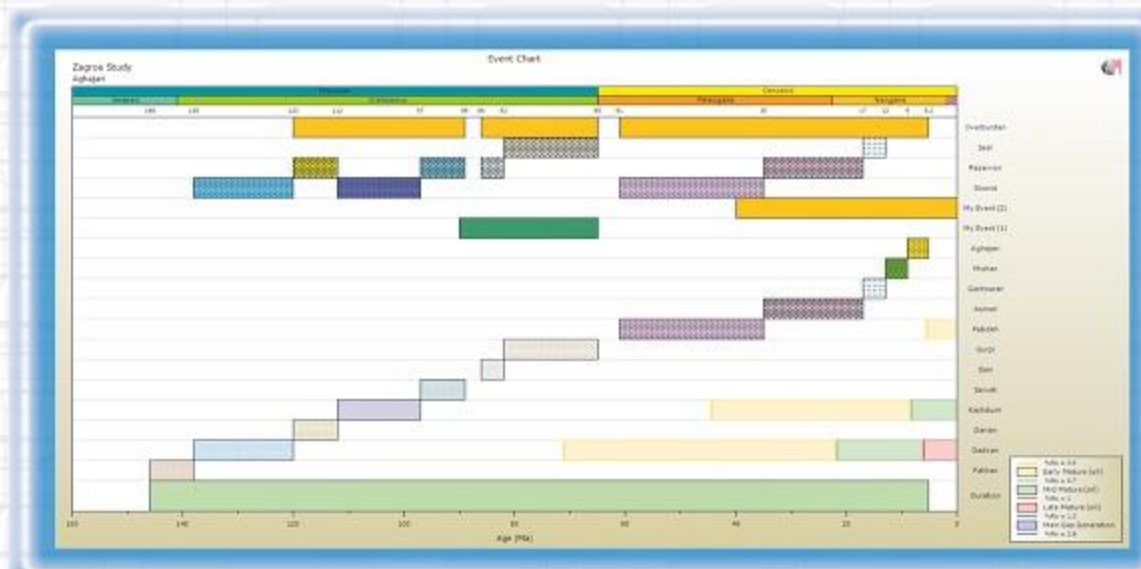
Cross Section



Maturity Model (TTI)



Maturity vs. Depth (Easy %Ro)



Event Chart

- *PBM 1D* allows the user to construct and work with multiple 1D basin models at the same time. The user can easily visualize spatial relationships between wells and to make gridded maps using any calculated values in the wells.
- *PBM 1D* makes formation database from available data to allow the user to enter wells stratigraphy data easier than ever.
- *PBM 1D* is simple but powerful 1D basin modeling software
- *PBM 1D* performs high performance real-time calculations in all aspects
- *PBM 1D* uses next generation 2D graphics technology to draw diagrams